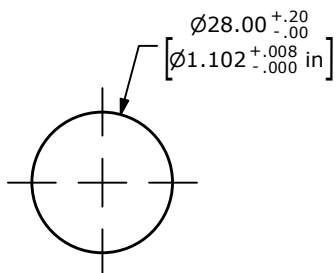


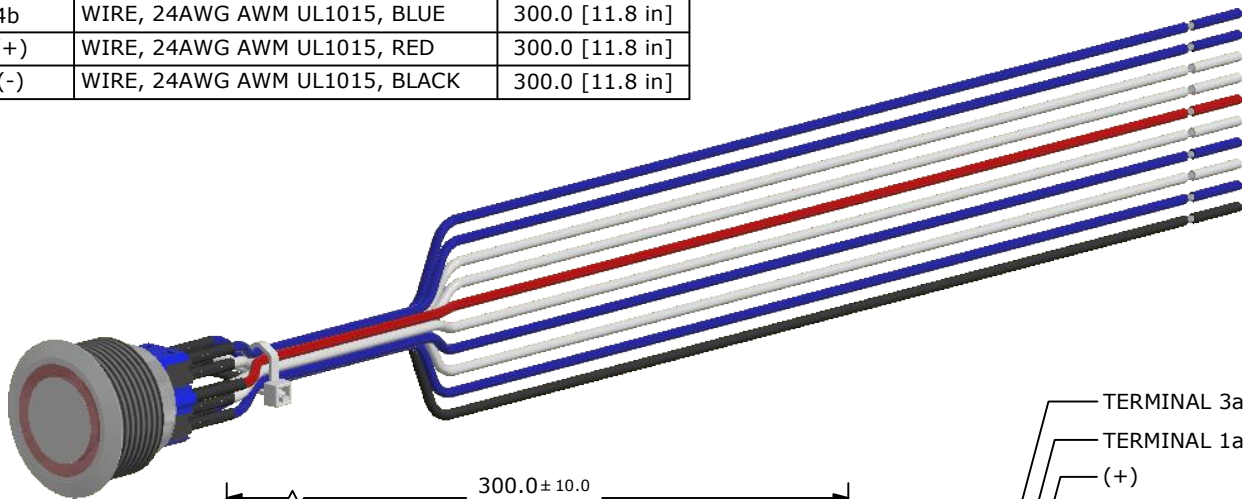
**SCHMATIC**

OFF - (ON) / ON - (OFF) - DPDT ILLUMINATED  
 ( ) DENOTES MOMENTARY FUNCTION



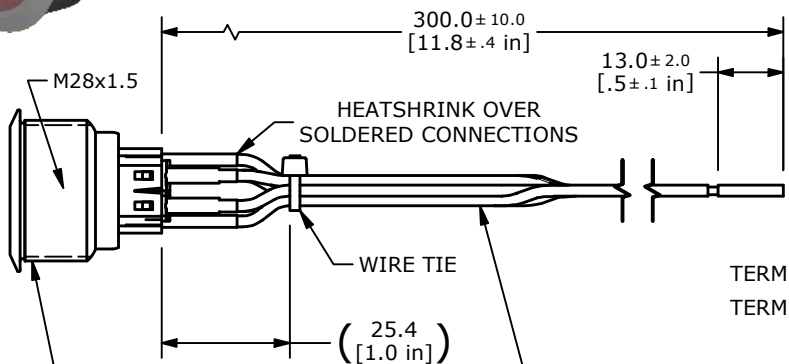
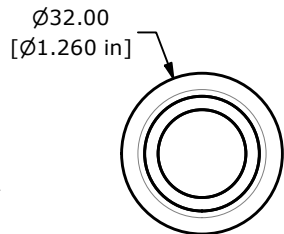
**RECOMMENDED PANEL CUTOUT**  
 MAX. PANEL THICKNESS 10.0 [.39 in]

SWITCH	WIRE	LENGTH
SW1-1a	WIRE, 24AWG AWM UL1015, WHITE	300.0 [11.8 in]
SW1-2a	WIRE, 24AWG AWM UL1015, WHITE	300.0 [11.8 in]
SW1-3a	WIRE, 24AWG AWM UL1015, BLUE	300.0 [11.8 in]
SW1-4a	WIRE, 24AWG AWM UL1015, BLUE	300.0 [11.8 in]
SW1-1b	WIRE, 24AWG AWM UL1015, WHITE	300.0 [11.8 in]
SW1-2b	WIRE, 24AWG AWM UL1015, WHITE	300.0 [11.8 in]
SW1-3b	WIRE, 24AWG AWM UL1015, BLUE	300.0 [11.8 in]
SW1-4b	WIRE, 24AWG AWM UL1015, BLUE	300.0 [11.8 in]
SW1- (+)	WIRE, 24AWG AWM UL1015, RED	300.0 [11.8 in]
SW1- (-)	WIRE, 24AWG AWM UL1015, BLACK	300.0 [11.8 in]

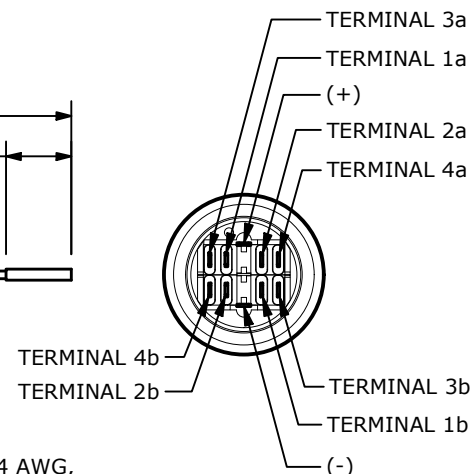


**NOTE:**

- ALL DIMENSIONS IN MM [INCH]
- GENERAL TOLERANCE: X.X = ± 0.4  
X.XX = ± 0.25
- TERMINAL NUMBERS FOR REF. ONLY
- FUNCTION: DPDT
- RATING: 2A @ 48VDC
- CONTACT RESISTANCE: 50mΩ MAX. @ 1A 12VDC
- INSULATION RESISTANCE: 1,000MΩ @ 500VDC
- DIELECTRIC STRENGTH: 2,000VAC MIN. FOR 1 MINUTE
- ELECTRICAL LIFE: 50,000 CYCLES
- OPERATING TEMPERATURE: -20°C TO 55°C
- INGRESS PROTECTION: IP66
- ▲ 12. SUPPLIED HARDWARE: O-RING AND HEXNUT
- ▲ 13. ▲ DENOTES CRITICAL PARAMETER
- ▲ 14. ILLUMINATION COLOR: RED
- ▲ 15. ILLUMINATION VOLTAGE: BASE VOLTAGE 1.8 V



SWITCH: PV9F2V0SS-311  
 BODY - STAINLESS STEEL  
 ACTUATOR - STAINLESS STEEL  
 RING ILLUMINATION COLOR: RED



**BOTTOM VIEW**  
 SHOWN WITHOUT WIRING



B	24666	UPDATE THREAD LENGTH TO 15.0	1/4/2021	JM
A	23888	NEW RELEASE	5/8/19	MJR
REV	PCR NO	DESCRIPTION	DATE	BY

TITLE PV9FWV0SS-311				
SCALE	DATE	DR	DWG	REV
2:3	5/8/2019	MJR	52-PV9FWV0SS311	B

THE INFORMATION CONTAINED IN THIS DOCUMENT IS PROPRIETARY TO E-SWITCH AND IS NOT TO BE COPIED OR TRANSFERRED